

CLASSIC FENCE



Adaptable
for any
project

FEATURES

Versatile Design

As the name suggest, our classic system is just that, a classic. It is an extremely versatile and easy to install fencing system that can be perfect for many different types of projects.

Security

The panels are rigid, giving it high structural resistance and tne up for security or down for safety. We recommend the Classic for flat, level terrain. Additional brackets may be required for stepped or sloped installations.

Strength

The classic system includes V-braces for extra lateral strength setting this fence apart from the rest.

APPLICATIONS

Ideal for amusement parks, commercial spaces, hotels, industrial areas, parking lots, playgrounds, pools, vineyards, schools, universities and sport complexes, among others.

V-shaped braces on each panel, providing added reistance, is what sets this system apart from the rest.



Houston Local: 832-467-5400
Austin Local: 512-717-3060
Chicago Local: 708-345-6660
Nationwide: 800-392-3655

QUESTIONS?
GIVE US A CALL

INTERCHANGEABLE PANELS AESTHETICS DURABILITY EASY INSTALLATION WEATHER RESISTANT



TECHNICAL SPECS

Panel

Height	Length	Opening	Steel brackets	Gauge		Wire Breaking Load
				Gauge	mm	
ft	m	in				psi
2	8	2 x 6	2	6	4.89	80,000 - 100,000
4	8	2 x 6	2	6	4.89	80,000 - 100,000
5	8	2 x 6	3	6	4.89	80,000 - 100,000
6	8	2 x 6	4	6	4.89	80,000 - 100,000
8	8	2 x 6	5	6	4.89	80,000 - 100,000

Post

2"x 2" Post

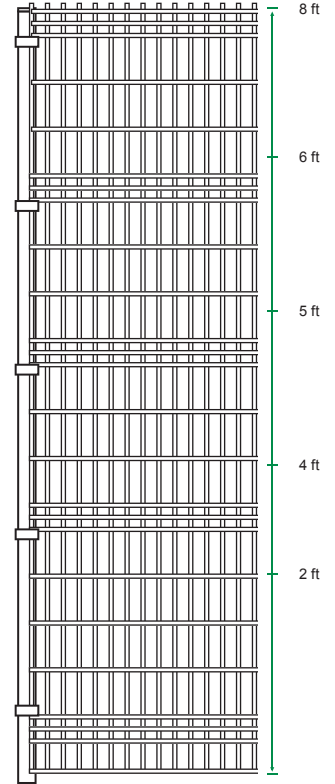
ITEM #	HEIGHT	GAUGE	COLOR
GP2164	48"	16	Black
GP2166	72"	16	Black
FW12892	72"	16	Green
GP2167	84"	16	Black
GP2168	96"	16	Black
FW12894	96"	16	Green
GP21611	132"	16	Black

2-1/4"x 2-1/4" Post

ITEM #	HEIGHT	GAUGE	COLOR
FW12020	72"	16	Black
FW12012	72"	16	Green
FW12022	96"	16	Black
FW12013	96"	16	Green
FW12023	132"	16	Black

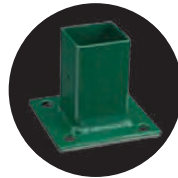
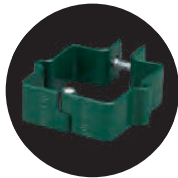
3"x 3" Post

ITEM #	HEIGHT	GAUGE	COLOR
GP3148	96"	16	Black
FW12855	96"	16	Green
GP31410	120"	16	Black
FW12856	120"	16	Green



INSTALLATION HARDWARE

- Polypropylene Cap
- Galvanized Steel bracket
- Upper arm 45° angle
- Steel plate Base



Steel Steel NF-EN-10016-2 Finish Powder Coating

Composition Powder Coating _____
 Phosphate _____
 Zinc Coating _____
 Steel _____

Colors GREEN BLACK BROWN WHITE BLUE YELLOW RED GRAY

10 year warranty Salt Spray Test for 1,000 hours ASTM B117



Connect with Us!

Houston Showroom
4404 Windfern Road
Houston, TX 77041

Austin Showroom
3306 Longhorn Blvd.
Austin, TX 78758

Chicago Showroom
2033 North 17th Ave.
Melrose Park, IL 60160

www.tsdistributors.com
sales@tsdistributors.com