

FLORENCE FENCE



Elegant
Ornamental
Fence

ADVANTAGES

Short fence enhancing

Florence fence is the perfect choice for short perimeter fences with its aesthetic design to give life to landscaping on parks, playgrounds or green areas.

Safe

The curved and smooth top finish on every panel makes Florence fence a safe alternative for those either inside and outside the fence perimeter.

Strong & Unique

Florence fence has a unique design combining beauty and strength. The double wire reinforcement across the panel gives it that extra impact strength required.

APPLICATIONS

Parks, playgrounds, commercial areas, corporate offices, hotels, parking lots, residential areas, zoos, schools & colleges, vineyards, among others.

Designmaster Fence Florence is manufactured of a continuous wire, curves & arcs shapes and structural reinforced with a horizontally double wire across the panel.



Houston Local: 832-467-5400
Austin Local: 512-717-3060
Chicago Local: 708-345-6660
Nationwide: 800-392-3655

QUESTIONS?
GIVE US A CALL

INTERCHANGEABLE PANELS AESTHETICS DURABILITY EASY INSTALLATION WEATHER RESISTANT



TECHNICAL SPECS

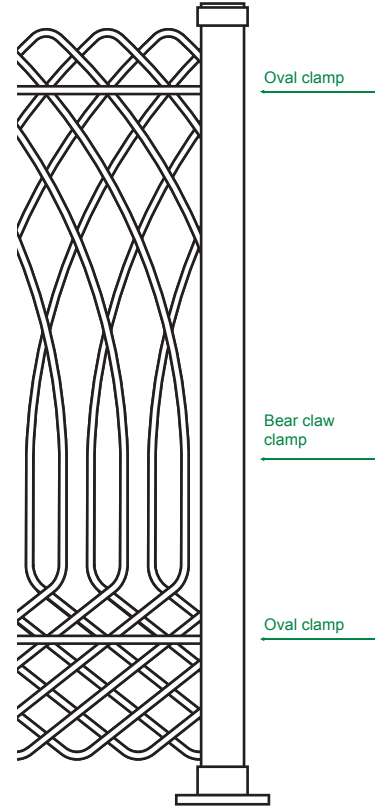
Panel

ITEM #	HEIGHT	COLOR
FW63766	31.2"H X 96"W	Green
FW63773	31.2"H X 96"W	White
FW63782	48"H X 96"W	Green
FW62636	48"H X 96"W	Brown
FW62679	48"H X 96"W	Black

Post

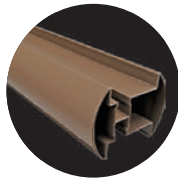
ITEM #	HEIGHT	COLOR
FW63677	55.2"H, for 31.2"H Panel	Green
FW63676	55.2"H, for 31.2"H Panel	White
FW63659	70.8"H, for 48"H Panel	Green
FW62638	70.8"H, for 48"H Panel	Brown
FW62686	70.8"H, for 48"H Panel	Black

Wire breaking load	Wire tension strength
PSI	Lbs (minimum)
55,000 - 70,000	2,500



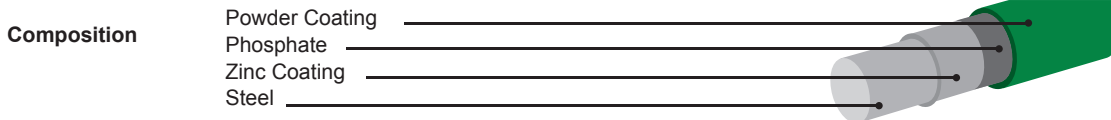
INSTALLATION COMPONENTS

- Oval clamp
- Bear claw clamp
- Aluminum post
- Polypropylene cap
- Base installation kit



- Stainless steel auto-drill fastener (1/8" x 1")

Steel Steel NF-EN-10016-2 **Finish** Powder Coating



- Colors**
- GREEN
 - BLACK
 - BROWN
 - WHITE
 - BLUE
 - YELLOW
 - RED
 - GRAY

10 year warranty
Salt Spray Test for 1,000 hours ASTM B117



Connect with Us!