

FORTE FENCE



Extreme security fence

FEATURES

Superior Anti-Climb Design

Forte fence openings are extremely tight, making the fence nearly impossible to scale with bare hands.

Highly Strong

All fence components are engineered to provide the highest strength not only within the fence panel but also on post and affixing accessories.

Versatile

Forte fence has two different designs: flat or with bends, making it adaptable to fence projects looking for discretion or a slight touch to enhance the fence aesthetics.

APPLICATIONS

Airports, government facilities, military zones, railroads, power stations, zoos, detention centers, among several others.

Designmaster Fence Forte is a welded wire fencing system with tight and non-climbable openings for top-notch security fencing.



Houston Local: 832-467-5400
Austin Local: 512-717-3060
Chicago Local: 708-345-6660
Nationwide: 800-392-3655

QUESTIONS?
GIVE US A CALL

INTERCHANGEABLE PANELS AESTHETICS DURABILITY EASY INSTALLATION WEATHER RESISTANT

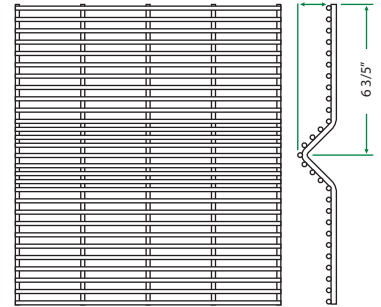
TECHNICAL SPECS

Panel

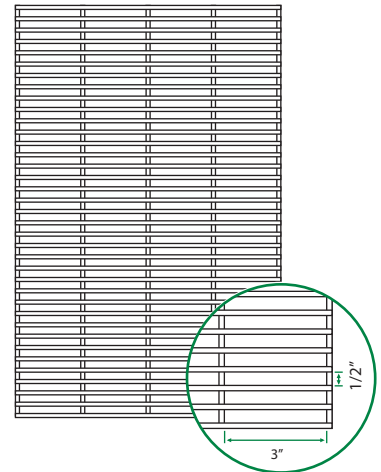
Design	Height	Length	Gauge
With V Brace	79"	99"	8
	99"	99"	8
Flat	79"	98"	8

For fence heights above 99" it is recommended to stack up panels.

V Brace Panel



Flat panel



Post

Post for Panels with V-Brace

ITEM #	HEIGHT	COLOR
FW63355	126"	Gray
FW63348	126"	Black

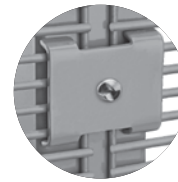
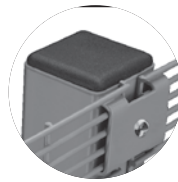
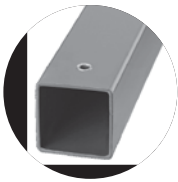
Post for Flat Panels

ITEM #	HEIGHT	COLOR
FW63441	106"	Gray
FW63440	106"	Black

Wire breaking load	Zinc coating	Opening	
PSI	oz/sq ft	(")	cm
70,000 - 90,000	0.18	1/2 x 3	7.62 x 1.27

INSTALLATION COMPONENTS

- Post - 2 1/2" x 2 1/2" Gauge 12
- Polypropylene cap
- Torx screws
- Steel clamp Galvanized



Steel **Steel NF-EN-10016-2** Finish Powder Coating

Composition Powder Coating _____
 Phosphate _____
 Zinc Coating _____
 Steel _____

Colors  10 year warranty
 Salt Spray Test for 1,000 hours ASTM B117



Connect with Us!